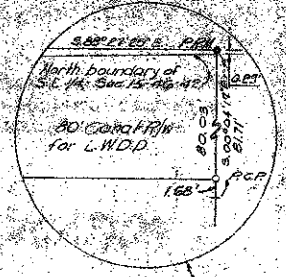


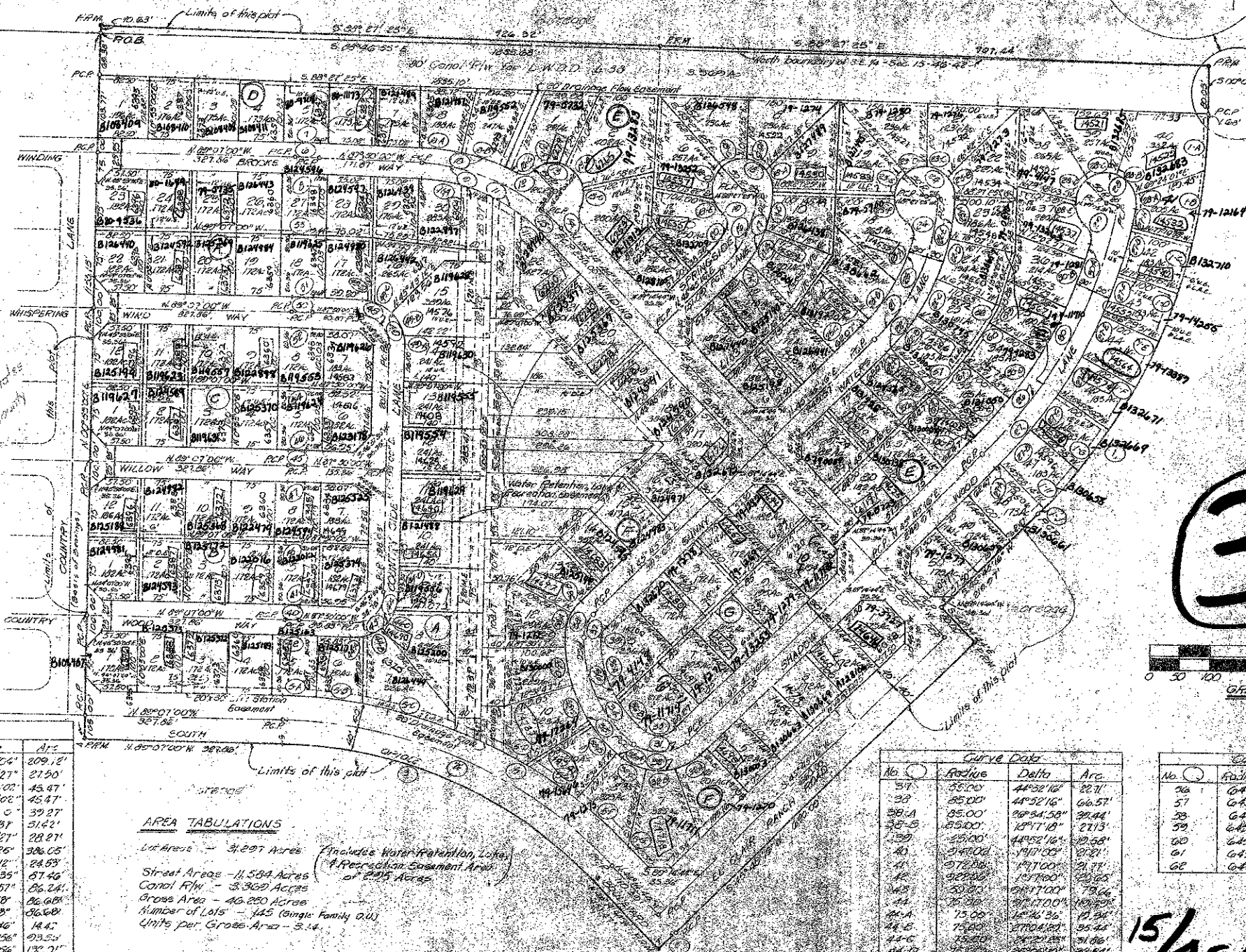
COCO WOOD LAKES - SECTION 1

A SUBDIVISION OF A PORTION OF
SECTION 15, TOWNSHIP 46 SOUTH, RANGE 42 EAST
PALM BEACH COUNTY, FLORIDA

98



No.	Radius	Delta	Arc
1	100.00	45°48'28"	723.01'
2	100.00	5°19'07"	84.01'
3	100.00	7°34'26"	119.63'
4	100.00	5°20'24"	84.35'
5	100.00	5°20'24"	84.35'
6	100.00	5°20'24"	84.35'
7	100.00	5°20'24"	84.35'
8	100.00	5°20'24"	84.35'
9	100.00	5°20'24"	84.35'
10	100.00	5°20'24"	84.35'
11	100.00	5°20'24"	84.35'
12	100.00	5°20'24"	84.35'
13	100.00	5°20'24"	84.35'
14	100.00	5°20'24"	84.35'
15	100.00	5°20'24"	84.35'
16	100.00	5°20'24"	84.35'
17	100.00	5°20'24"	84.35'
18	100.00	5°20'24"	84.35'
19	100.00	5°20'24"	84.35'
20	100.00	5°20'24"	84.35'
21	100.00	5°20'24"	84.35'
22	100.00	5°20'24"	84.35'
23	100.00	5°20'24"	84.35'
24	100.00	5°20'24"	84.35'
25	100.00	5°20'24"	84.35'
26	100.00	5°20'24"	84.35'
27	100.00	5°20'24"	84.35'
28	100.00	5°20'24"	84.35'
29	100.00	5°20'24"	84.35'
30	100.00	5°20'24"	84.35'
31	100.00	5°20'24"	84.35'
32	100.00	5°20'24"	84.35'
33	100.00	5°20'24"	84.35'
34	100.00	5°20'24"	84.35'
35	100.00	5°20'24"	84.35'
36	100.00	5°20'24"	84.35'
37	100.00	5°20'24"	84.35'
38	100.00	5°20'24"	84.35'
39	100.00	5°20'24"	84.35'
40	100.00	5°20'24"	84.35'
41	100.00	5°20'24"	84.35'
42	100.00	5°20'24"	84.35'
43	100.00	5°20'24"	84.35'
44	100.00	5°20'24"	84.35'
45	100.00	5°20'24"	84.35'
46	100.00	5°20'24"	84.35'
47	100.00	5°20'24"	84.35'
48	100.00	5°20'24"	84.35'
49	100.00	5°20'24"	84.35'
50	100.00	5°20'24"	84.35'
51	100.00	5°20'24"	84.35'
52	100.00	5°20'24"	84.35'
53	100.00	5°20'24"	84.35'
54	100.00	5°20'24"	84.35'
55	100.00	5°20'24"	84.35'
56	100.00	5°20'24"	84.35'
57	100.00	5°20'24"	84.35'
58	100.00	5°20'24"	84.35'
59	100.00	5°20'24"	84.35'
60	100.00	5°20'24"	84.35'
61	100.00	5°20'24"	84.35'
62	100.00	5°20'24"	84.35'



No.	Radius	Delta	Arc
28	50.00	29°28'04"	209.12'
28-A	50.00	3°30'27"	21.50'
28-B	50.00	52°06'02"	45.47'
28-C	50.00	52°06'02"	45.47'
28-D	50.00	4°01'00"	39.27'
28-E	20.00	59°55'37"	31.42'
29	25.00	64°47'27"	23.27'
30	145.00	29°41'26"	306.05'
30-A	145.00	1°23'12"	24.53'
30-B	145.00	6°43'35"	87.46'
30-C	145.00	6°37'57"	86.24'
30-D	145.00	6°39'58"	86.08'
30-E	145.00	6°39'38"	86.68'
30-F	145.00	1°03'46"	14.42'
31	64.00	82°53'56"	63.54'
32	24.60	82°38'56"	132.31'
32-A	24.60	82°29'26"	40.44'
32-B	24.60	34°40'15"	56.42'
32-C	24.60	24°49'14"	40.16'
33	34.60	82°58'56"	32.11'
34	225.39	52°08'49"	205.15'
35	225.39	36°00'49"	222.44'
35-A	225.39	3°30'34"	17.15'
35-B	225.39	14°38'31"	66.75'
35-C	225.39	14°58'53"	66.75'
35-D	225.39	14°51'40"	66.24'
35-E	225.39	3°20'43"	15.76'
36	125.39	59°03'49"	177.93'
36-A	125.39	3°33'10"	10.71'
36-B	125.39	62°33'34"	10.12'

AREA TABULATIONS
 Lot Area - 3,297 Acres (Includes Water Retention Lakes & Percolation Easement Area of 225 Acres)
 Street Area - 11,584 Acres
 Canal R/W - 3,369 Acres
 Gross Area - 48,280 Acres
 Number of Lots - 145 (Single Family D.U.)
 Units per Gross Area - 3.14

No.	Radius	Delta	Arc
36	35.00	44°32'16"	22.71'
37	35.00	44°52'16"	22.57'
38-A	35.00	26°54'58"	39.44'
38-B	35.00	18°47'18"	27.13'
39	25.00	44°52'16"	12.58'
40	24.00	14°07'02"	8.21'
41	27.00	14°17'00"	21.71'
42	22.00	15°17'00"	22.65'
43	25.00	14°17'00"	21.66'
44	25.00	14°17'00"	21.66'
45	25.00	14°17'00"	21.66'
46	25.00	14°17'00"	21.66'
47	25.00	14°17'00"	21.66'
48	25.00	14°17'00"	21.66'
49	25.00	14°17'00"	21.66'
50	25.00	14°17'00"	21.66'
51	25.00	14°17'00"	21.66'
52	25.00	14°17'00"	21.66'
53	25.00	14°17'00"	21.66'
54	25.00	14°17'00"	21.66'
55	25.00	14°17'00"	21.66'
56	25.00	14°17'00"	21.66'
57	25.00	14°17'00"	21.66'
58	25.00	14°17'00"	21.66'
59	25.00	14°17'00"	21.66'
60	25.00	14°17'00"	21.66'
61	25.00	14°17'00"	21.66'
62	25.00	14°17'00"	21.66'

No.	Radius	Delta	Arc
56	645.00	1°10'50"	1125.00'
57	645.00	7°51'40"	2225.00'
58	645.00	7°50'58"	2236.00'
59	645.00	6°37'57"	1866.00'
60	645.00	1°02'42"	76.52'

15/46/42
 1000-128 34
 98

COCO WOOD LAKES - SECT. 1